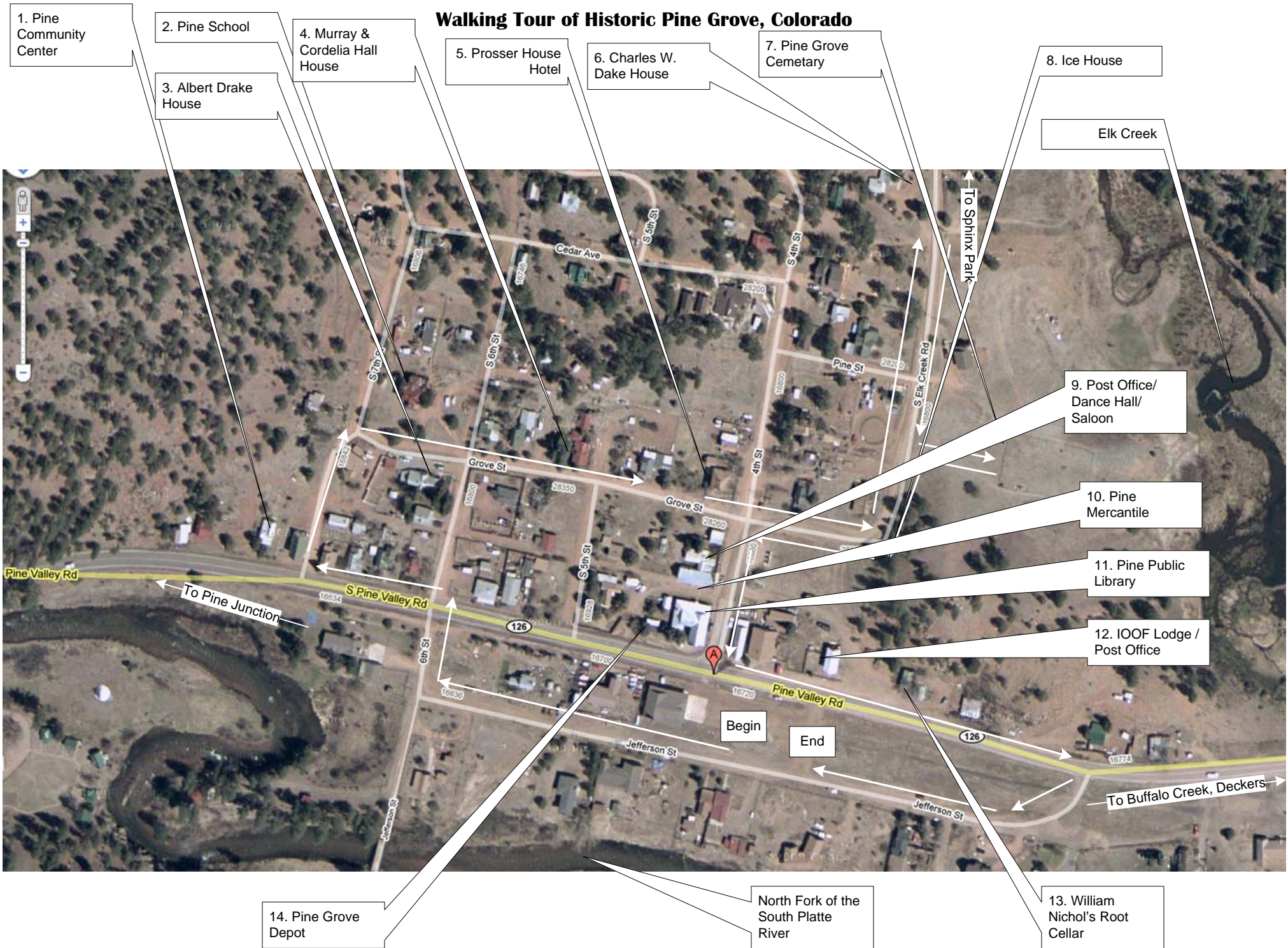


Walking Tour of Historic Pine Grove, Colorado



Historic Pine Grove, Colorado

1. Pine Community Center

Constructed as a church in 1894 or 1898, the building was donated to the community of Pine grove by Mr. Baehr of Baehr Den of the Rockies (now Jeffco Open Space's Pine Valley Lodge). This is a key example of a vernacular church building with clear, simple lines. It occupies a prominent location along the highway (one the railroad right-of-way)

2. Pine Grove School

Now a private residence, the school was built in 1896 on the hillside overlooking the river and railroad.

3. Albert Dake House

Albert Dake, son of town founder Charles Dake, operated the pine Mercantile and Post Office from 1907 to 1939. His one-story, cross-gabled building was built in 1886. The shed roof, partial wrap-around porch with turned posts and a railing of vertical sticks are typical elements of vernacular or Folk-Victorian style.

4. Murray & Cordelia Hall House

Murray was a local cowboy, Cordelia a school teacher, in Pine grove's early days.

5. Prosser House Hotel

Built in 1886, the hotel had 9 rooms for rent, each of which opened onto a 2nd floor balcony. It was the only 2-story building in town at the time. The present owner claims that one room is haunted by a woman purportedly killed there.

6. Charles W. Dake House

Designed by renowned Denver architect Frank E. Edbrooke in 1886 for Pine Grove founder Charles W. Dake, the cross-gabled Victorian shows Queen Anne features such as the wrap-around porch, brackets and turned posts.

7. Pine Grove Cemetery

Located on the east edge of town overlooking a scenic vista, the cemetery land was donated to the town by founder Charles Dake.

8. Ice House

Ice cut from nearby Crystal Lake was stored here under sawdust for use during warn months.

9. Post office/Dance Hall/Saloon

This typical false front commercial building, built in 1890 was at various times a dance hall and saloon, as well as a grocery store with a post office. Purportedly, were shot in the saloon.

10. Pine Mercantile

Now the Pine Emporium, this important community building was run by Charles Dake from 1888 to 1907, and his son, Albert Dake, from 1907 to 1939.

11. Pine Public Library

Originally a saloon and dining room when built in 1885, the back room was sunken and used for ice storage for the saloon.

12. IOOF Lodge / Post Office

Built in 1907 by the Independent Order of Odd Fellowes.

13. William Nichol's Root Cellar

Thought to have stored potatoes and been used by railroad workers.

14. Pine Grove Depot

The Pine Grove Depot was located at the center of the community between the switching yards and the commercial area. Conversion of the rail bed to a highway in 1937 required its demolition.